

ASSEMBLY INSTRUCTIONS

RAYNOR SIXTH SCALE FIGURE

ATTENTION: PLEASE USE CAUTION DURING ASSEMBLY

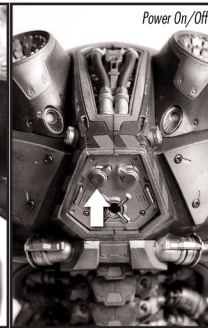
FOR FURTHER ASSISTANCE:

CALL US (WITHIN U.S.): 1-855-SIDESHOW

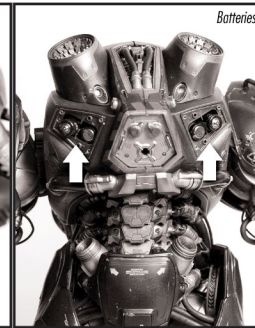
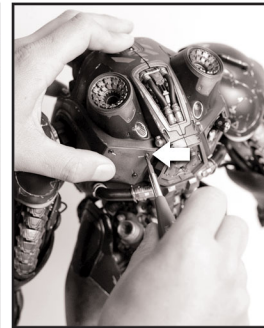
CALL US (OUTSIDE U.S.): 1-805-214-2157



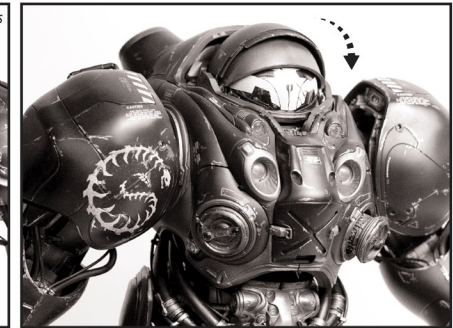
Included: Articulated Figure Body with highly detailed articulated armor, Removable Helmet with retractable blast shield visor, Non-helmet hair display, C-14 Impaler Gauss Rifle, Revolver Pistol with fabric holster, Sniper Rifle, Light up effects in chest, engine vents, and Gauss Rifle.



Power cell chest pullouts (on both sides). Power button for light-up elements in the chest and engine vents located on back panel.



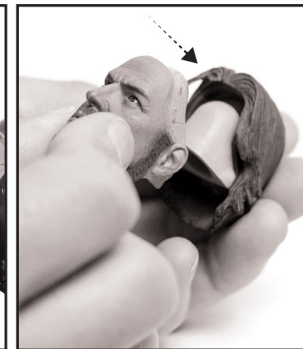
Batteries for light-up components: Remove screws from the two back panel battery compartments (figure takes four AAA batteries).



Double shield helmet silver. Blast shield does not fully close.



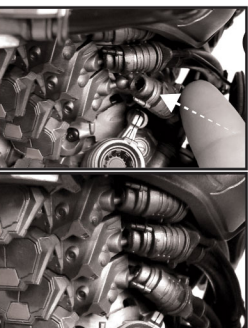
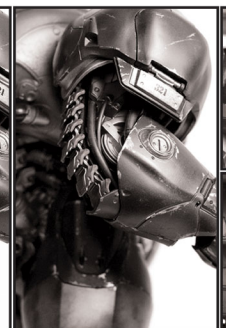
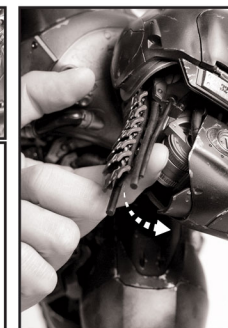
Revolver placement located on figures right leg. Holster straps hook onto the front and back of the upper thigh.



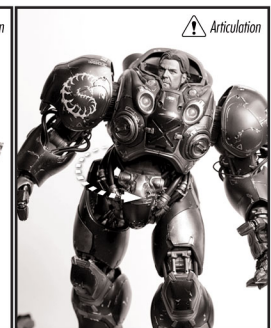
To remove helmet slightly compress both sides at the base and lift off (be careful of mic). For display without helmet, swap out hair (friction fit).



Insert bayonet into C-14 Impaler Gauss Rifle, light-up power button located on top handle, batteries located in cartridge (rifle takes two LR44 Batteries). Wrist extends for rifle posing. Please note: Sniper Rifle recoil lever does not move.



Re-insert any misplaced pipes back into elbow/forearm area. Reattached any unattached pipes onto the ball joints in the waist/lower back area.



Please note: be mindful of limited knee and waist articulation. Please use care when posing.



SIDESHOW.COM