

# ASSEMBLY INSTRUCTIONS

PINHEAD - PREMIUM FORMAT™ FIGURE

**ATTENTION:** PLEASE USE CAUTION DURING ASSEMBLY

FOR FURTHER ASSISTANCE:

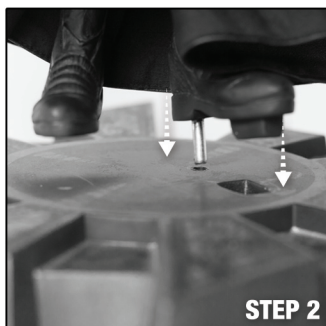
CALL US (WITHIN U.S.): 1-855-SIDESHOW

CALL US (OUTSIDE U.S.): 1-805-214-2157



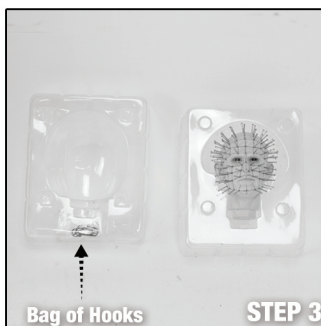
STEP 1

**STEP 1:** Place base on flat surface.



STEP 2

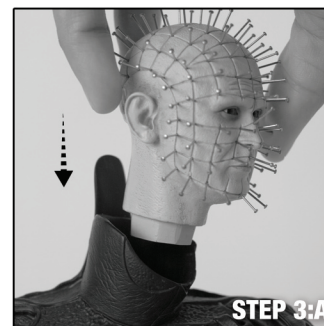
**STEP 2:** Place figure on base and align keys.



Bag of Hooks

STEP 3

**STEP 3:** Carefully open case with figure's head and hooks. Place head on figure's body, align key.

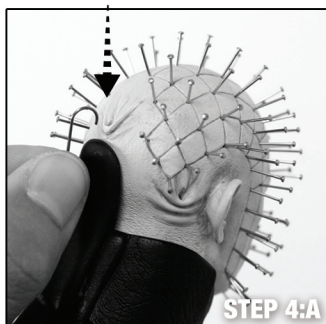


STEP 3:A



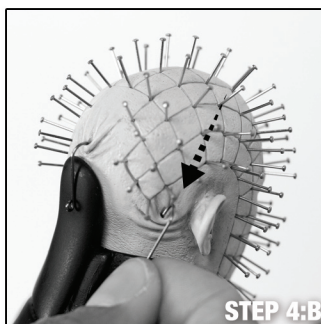
STEP 4

**STEP 4:** Open bag with hooks, 3 needed for display. (extra set included)

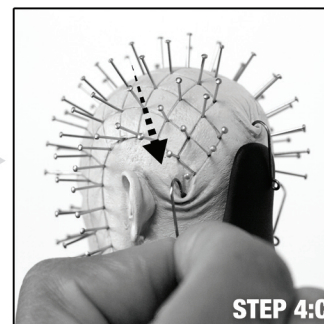


STEP 4:A

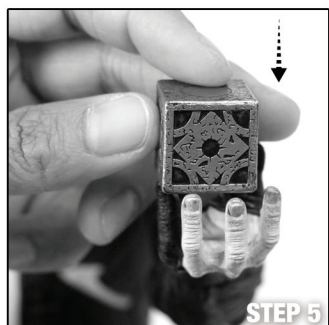
**STEP 4:** Carefully attach first hook to figures head center. Repeat for left and right side.



STEP 4:B



STEP 4:C



STEP 5

**STEP 5:** Place puzzle box in figures hand.



EXCLUSIVE

**Exclusive:** Place open puzzle box in figures hand.



**SIDESHOW**

[SIDESHOW.COM/Instructions](http://SIDESHOW.COM/Instructions)