

ASSEMBLY INSTRUCTIONS

OGLAVAEIL: THE EXECUTIONER PREMIUM FORMAT™ FIGURE

ATTENTION: PLEASE USE CAUTION DURING ASSEMBLY

FOR FURTHER ASSISTANCE:

CALL US (WITHIN U.S.): 1-855-SIDESHOW

CALL US (OUTSIDE U.S.): 1-805-214-2157



1. Place the chained belt over the waist, making sure it does not obstruct the upper torso.



2. Bring the upper torso over the waist, and fit the peg into the hole as shown above.



3. The drapery has (3) connection points and can be displayed with either color facing out.



4. Take the silver center connection point on the drapery and insert it onto the designated spine point.



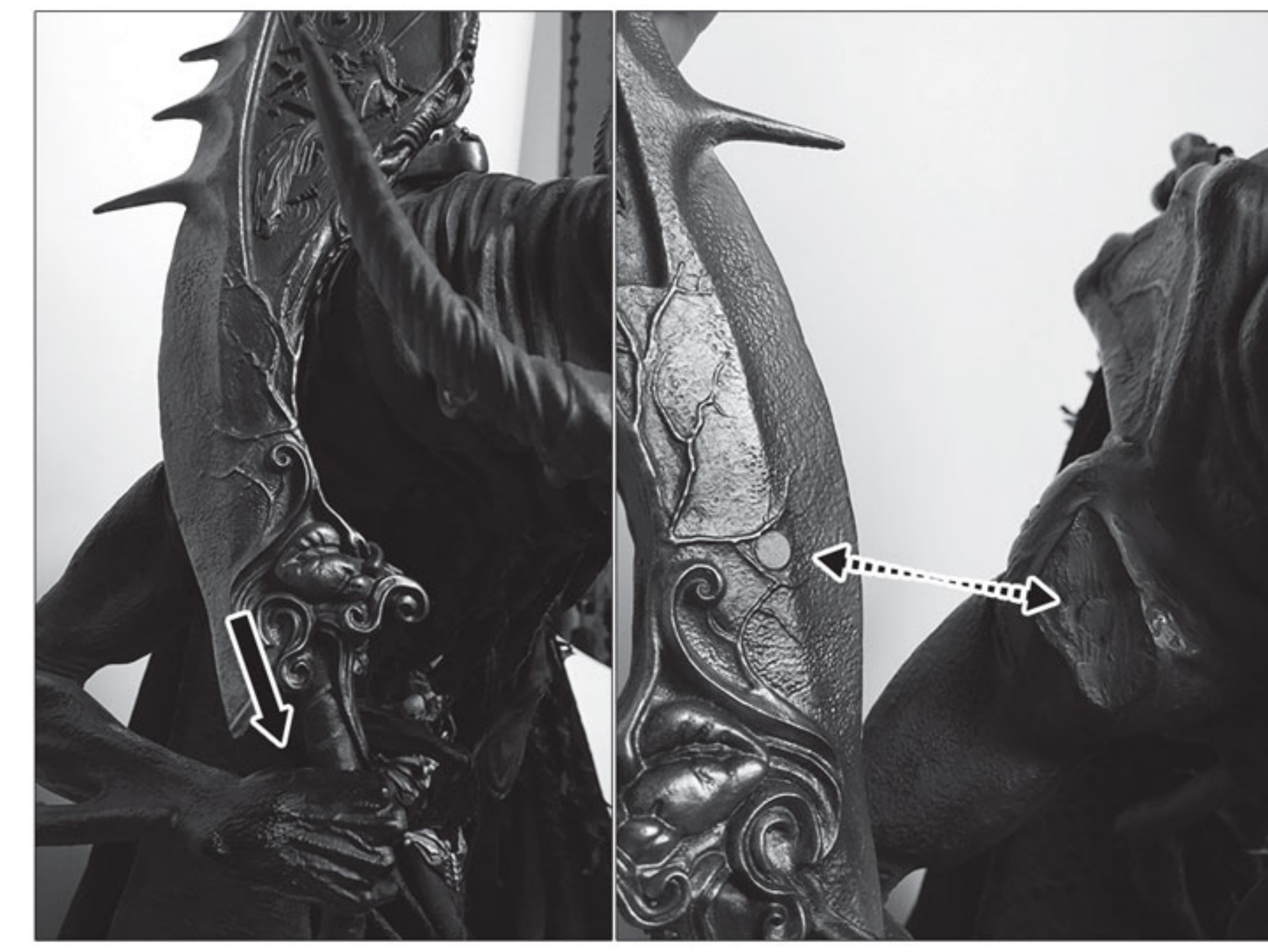
5. Put the bronze connection point on the peg located near the elbow on the left arm.



6. Do the same on the other arm.



7. Adjust the hanging drapery to desired look, making sure it is not caught on any parts.



8. Rest the handle of the sword in the hand as seen on the left image. Attach the sword to the right shoulder using the magnets shown in the right image.



SIDESHOW

For more information visit: SIDESHOW.COM/Instructions

ASSEMBLY INSTRUCTIONS

OGLAVAEIL: THE EXECUTIONER PREMIUM FORMAT™ FIGURE

ATTENTION: PLEASE USE CAUTION DURING ASSEMBLY

FOR FURTHER ASSISTANCE:

CALL US (WITHIN U.S.): 1-855-SIDESHOW

CALL US (OUTSIDE U.S.): 1-805-214-2157



9. Place the other sword peg into the hand as shown above, making sure the notch is facing upward.

Please note: To avoid injury or damage, please remove the swords when moving your statue.



1. If you also have "Skratch" the Hound of the Executioner, his base is designed to be complimentary to Oglavaeil's.



2. Place Skratch in front of Oglavaeil and line up the edges as shown above, and push together until snug.



Skratch Sold Separately.
<http://sideshow.com/skratch>



SIDESHOW

For more information visit: SIDESHOW.COM/Instructions