

HARDWARE INCLUDES: 2 LONG SECURING BOLTS (EQUAL LENGTH) * ASSEMBLY MAY REQUIRE TWO OR MORE PEOPLE

1 SHORT TORSO PEG
2 WASHERS (FOR ARM ATTACHMENTS)
2 HEX NUTS TO SECURE ARMS

STAR WARS
THE
OLD REPUBLIC

1



LAY BASE FLAT ON THE GROUND

2



CONNECT WIRES INTO BASE FOR LIGHT UP FEATURE (CHECK FOR ANY DAMAGED WIRES/COILS)

3



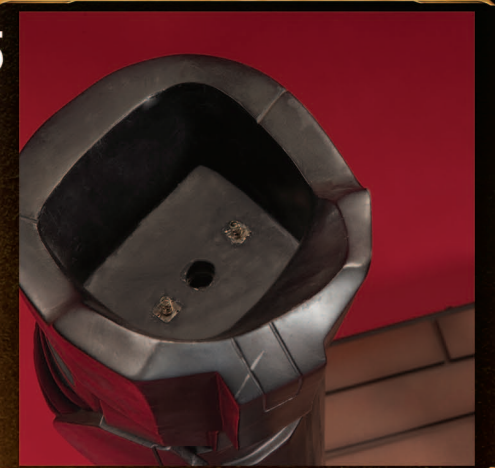
PLACE THE PEG OF THE RIGHT FOOT INTO THE PLACE HOLDER

4



REPEAT STEP 3 WITH THE LEFT LEG

5



NOTICE PLACE HOLDER FOR LONG BOLT IN BOTH LEFT/RIGHT LEG (REFER TO STEP 7)

6



PLACE HIP AND THIGH SECTION INTO BOTH LEFT/RIGHT LEGS

7



PLACE BOTH LONG BOLTS INTO WAIST SECTION

8



SECURE BOTH BOLTS WITHIN THE WAIST SECTION

9



REPEAT FASTENING FOR BOTH SIDES

10



PLACE 10" TORSO PEG INTO DESIGNATED AREA WITHIN THE WAIST SECTION

11



MAKE SURE ALL BOLTS/PEGS ARE SECURELY FASTENED

12



PLACE UPPER TORSO ONTO THE TORSO PEG

13



MAKE SURE UPPER TORSO IS ALIGNED WITH THE WAIST SECTION

14



NOTICE LONG BOLT

15



PLACE RIGHT ARM ONTO THE LONG BOLT

SIDESHOW
COLLECTIBLES

16



PLACE WASHER ON PEG SCREW AND
SCREW HEX NUT ON

17



ATTACH MAGNETIC PLATE TO COVER
THE BOLT. (REPEAT STEPS 14-17
FOR LEFT ARM)

18



NOTICE PLACE HOLDER ON THE
TOP OF THE UPPER TORSO

19



GENTLY PLACE HEAD INTO THE TOP OF
THE TORSO

20



MAKE SURE THE HEAD IS SECURELY
SETTLED ONTO THE UPPER TORSO

21



PLACE THE HOOK FROM THE CAPE
ONTO THE EYES LOCATED ON THE
RIGHT SHOULDER

22



SECURELY FASTEN AND REPEAT ON
THE LEFT SHOULDER

23



ARRANGE CAPE AROUND THE SHOULDERS

24



SLIDE THE GUARD ONTO THE HILT

25



SLIDE BLADE ONTO THE HILT
(DO NOT TWIST OR FORCE. SLOWLY
TURN ON CONTACT UNTIL IT SEATS ITSELF)

26



PLUG THE POWER SOURCE INTO THE
BACK SIDE OF THE BASE

27



THE POWER BUTTON ON THE BASE
OPERATES THE LIGHTS, GAUNTLET, CHEST
AND MASK

28



THE POWER BUTTON FOR THE LIGHT
SABER IS LOCATED ON THE BACK
OF THE HILT

29



COMPLETED DARTH MALGUS
LIFE SIZE FIGURE